

# CAMP IT UP

with BRIGHTON HASH HOUSE HARRIERS.

40<sup>th</sup> Anniversary R\*n weekend,

Brighton Rugby Club - Waterhall playing fields

**FINAL DESTRUCTIONS** (please read in conjunction with Newsletter #1):

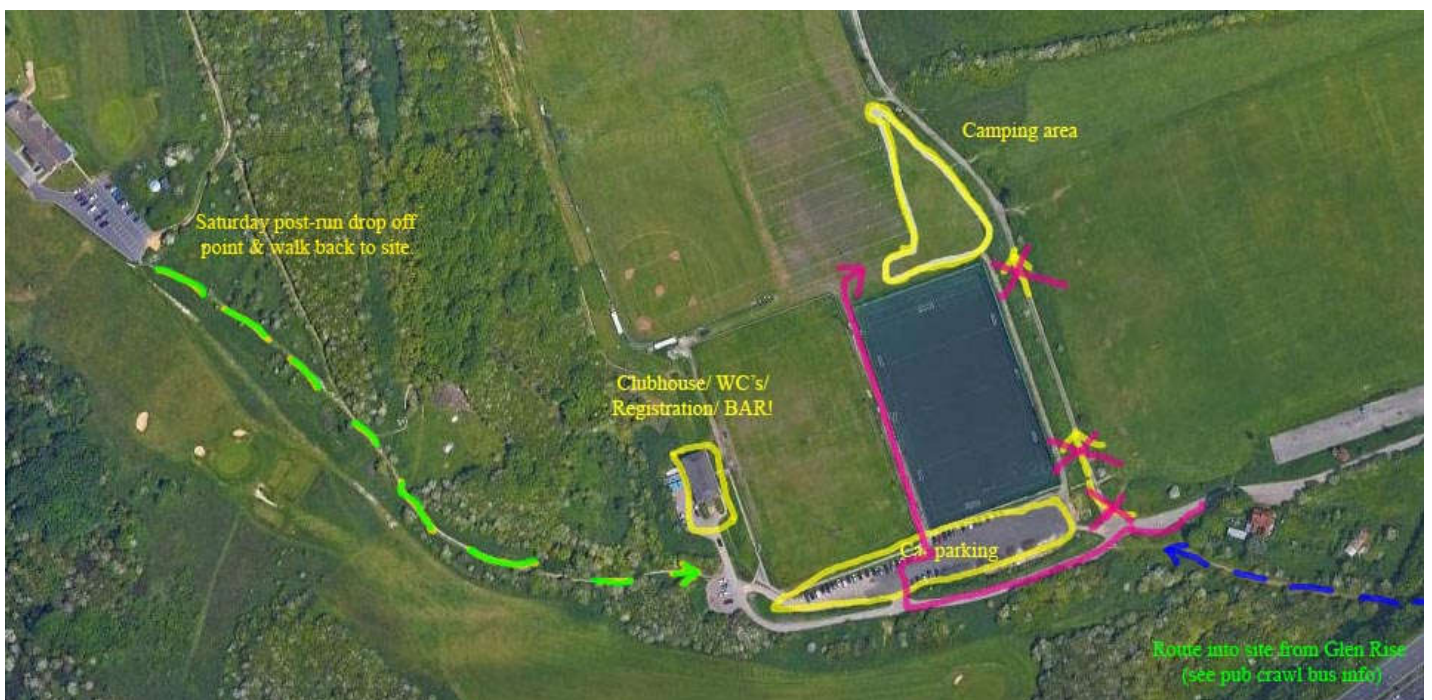
**Emergency numbers:** Bouncer 0770 99 66 255      Bogeyman 0780 229 8450

**Getting there:** If you've requested a pick up from **Preston Park station**, please phone either of the above numbers after passing Hassocks station and we will try and give you an ETA for pick up. Unless your train goes directly to Brighton, in which case please get the next train back and call on departure.

This will be available until 8pm. After that please take a cab or join in the pub crawl with all your gear!

### Revised map of site:

Apologies, but the original road doesn't actually reach the campsite, so follow the pink route! Left of the All Terrain Pitch is the recommended track, but is fairly rugged so take-it slow, or leave car in car park.



### Registration with the Glammer girls - Falling Madonna and Red Slapper:

Inside the clubhouse from 4pm Friday; collect wristbands, drink vouchers, and special souvenirs. T-shirts, including those pre-ordered will also be available nearby.

**SATURDAY R\*NS** – Your hand-picked hares will lead you on some beautiful trails in the area.

**Long trail by Drambulie and Bosom Boy** – about 11 miles. White flour. Not for the faint-hearted!

**Medium trail by Hot Fuzz** – About 8.5 miles. Purple flour. Great views and a couple of testing hills.

**SLASH H3 trail by Testiculator** – 4.5 miles inc. pub stops. Sawdust/ flour mix. Bring cash for pubs!

**'What in these heels?' by Bouncer** – 2 miles direct to lunch stop. Yellow flour.

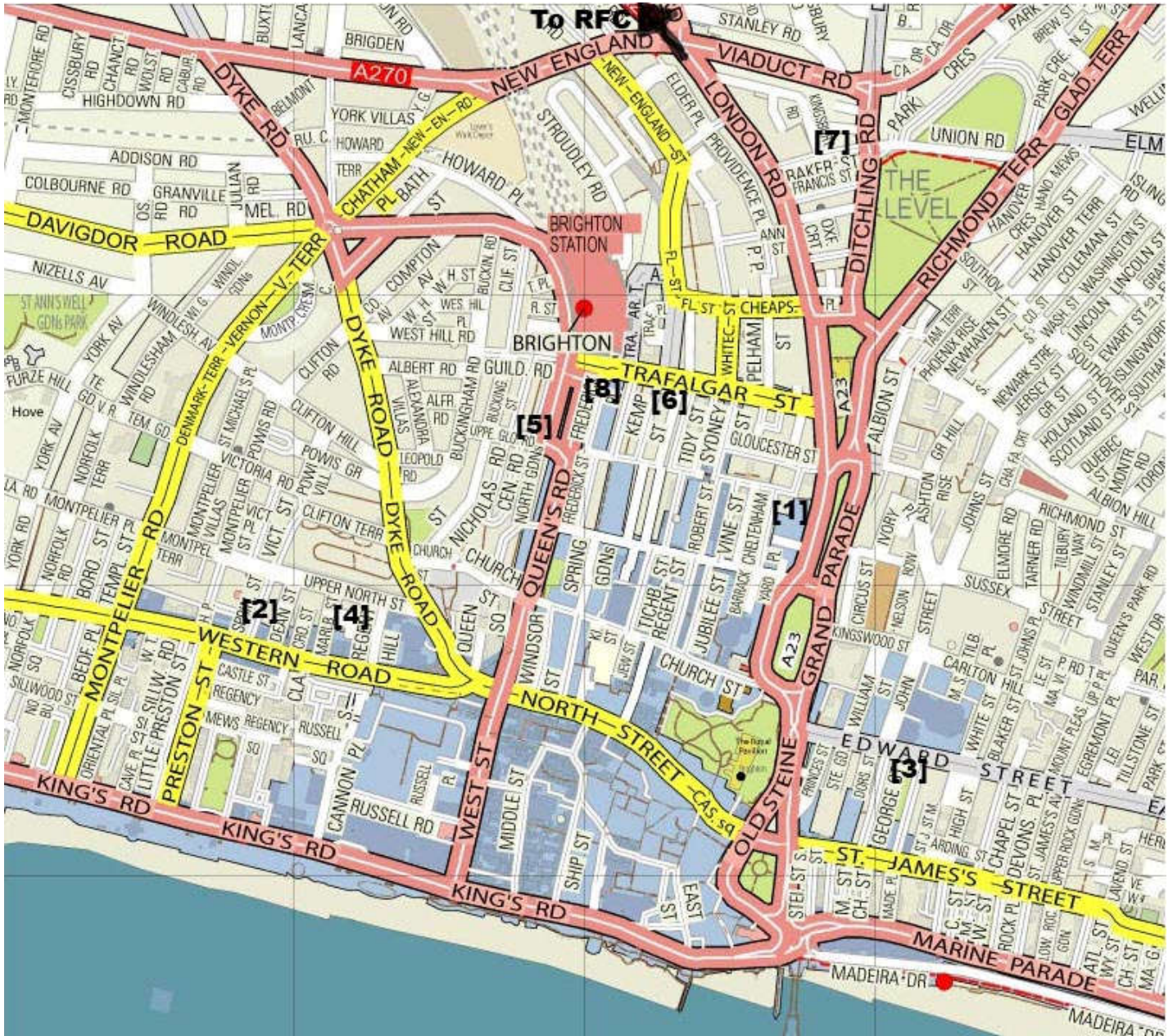
You will be given a bottle of water at the start. Please be green and hang on to this to refill at the sip stops on trail. Post-run transport back to just above the site from c.3 to 4pm – see map for walk down.

**SUNDAY HANGOVER R\*N Hare: Cooperman** – Just to clear the head!

**REMINDER:** Don't forget to bring tankards if you have them, and a labelled mug for teas and coffees!

## Lily the Pinks Friday night pub crawl – CRAFT H3 10<sup>th</sup> anniversary:

This will be a self-guided pub crawl visiting pubs in this years CAMRA and South Downs branches Ale Trail.  
See separate attachment for a suggested route, and description of the pubs below:



[1] **Basketmakers Arms** – Ever popular back street local. There is a tradition of popping notes in the tins on the wall for future imbibers to while away the drinking time. Have a look and pop your own notes in! Food available until 9pm.

[2] **Brighton Beer Dispensary** – Superb reinvention of the old Prince Arthur with an always excellent selection of beers. Food available until 9pm.

[3] **Brighton Bierhaus** – Only opened last year as the brewery tap for Brighton Bier ales, this one has quickly become the local runners favourite meeting point in town. Pizzaface grub available until 10pm. **nb Bonus pub for extra keen!**

[4] **CRAFT Brighton** – Well, the crawl wouldn't be complete without a visit, even if they did breach copyright issues by stealing our name. Microbrewed beers were just that until the US concept of CRAFT beers hit UK shores. CRAFT beer co established 2011, three years after CRAFT H3 became a regular monthly thing, just saying!

[5] **Evening Star** – Another 'must' is this excellent hash-owned establishment (*Pete Halliday aka Humper*) and original home of Dark Star. Always excellent selection of brews available.

[6] **Lord Nelson** – The town tap for Harveys beers, full range available. A recent extension has blown away the traditional view that pubs should have small windows so that those enjoying their beer should not be judged by passers-by, by creating an 'on-board' feel in the lower decks. Great menu available until 9pm.

[7] **The Mitre** – One bar backstreet pub, popular with locals, and a stepping stone on the journey back to the RFC.

[8] **Prince Albert** – Always lively music pub with arty bohemian feel. Check out the mural on the side of the building!

**Emergency number: Lily the Pink 0777 402 7345**